



<http://www.atcgroups.com/>



<https://www.google.com/maps>



STEEL GRAFTING

AIRTAC ENTERPRISES PHILS. CO. LTD. CORP

MAIN OFFICE: UNIT 57 & 58 CENTURY COMMERCIAL COMPLEX V
FILIPARAN ROAD SALAVAG DASMARIAS, CAVITE

TELEPHONE NO. : (046)430-0027 (046)430-0034 (046)430-0080
(046)884-6468 (046)884-6252 (046)884-1155
(046)884-1166 (046)884-6296 (046)686-2217
(046)686-2204 (028)463-1269 (028)463-1270
(028)463-1279

EMAIL ADDRESS: AIRTAC.ATCGROUP@YAHOO.COM

MANILA BRANCH: 5th-A, Valenzuela, 1140 Metro Manila
TELEPHONE NO.: 0945-522-8595 / 0962-589-0686

CEBU BRANCH: Mandawe City Cebu
TELEPHONE NO. 0954-197-9213 / 0961-745-6005

BACOLOD BRANCH: Bacolod, negros Occidental
TELEPHONE NO. 0905-441-5695 / 0962-742-4187

CAGAYAN DE ORO BRANCH: Cagayan de Oro, Misamis Oriental
TELEPHONE NO. 0961-641-1927

3D Curved Fence

Material: High quality low carbon steel wire, galvanized iron wire etc.

Manufacturing process: spot welding, gas shielded welding.

Finishing: Galvanized, powder coated, PVC coated.

The panels and posts are jointed together with bolts or rivets, using the steel flat bar, or special steel clamps. This also can be designed as the special clients requests.

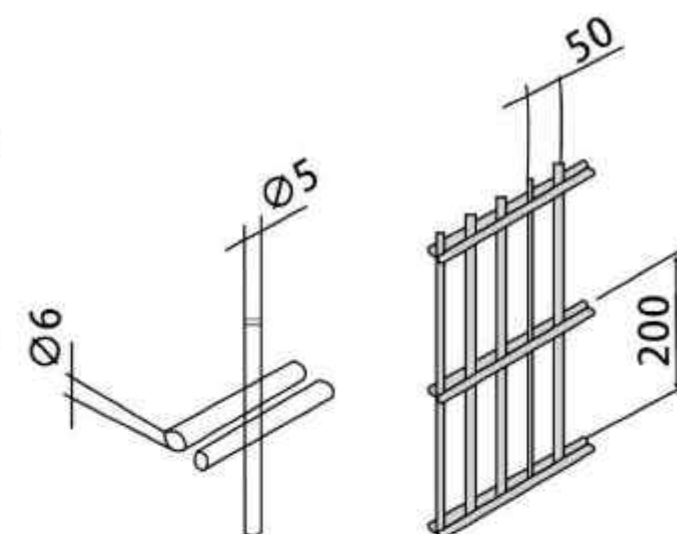
specification of fence panel				
Panel Height	Panel Length	Wire Diameter	Mesh Size	Folds No.
1.03m	2.0m 2.5m 2.0m	3.0mm/4.0mm	50*200mm	2
1.23m				2
1.5m				2/3
1.53m				2/3
1.7m		4.0mm/5.0mm	50*150mm	3
1.73m		4.85mm/5.0mm	50*100mm	3
1.8m		5.0mm/6.0mm	75*150mm	3
1.93m		5.85mm/6.0mm		3
2.0m				4
2.03m				4
2.4m				4



Double Wire Fence

Double wire fence is tall, strong, attractive and durable. It has good crashworthiness. This kind of fence is widely used in playground, sport court, parking lot, airport, etc.

The panels and posts are jointed together with bolts or rivets, using the steel flat bar, or special steel clamps. This also can be designed as the special clients requests.



→ 358 Security Fence

358 Security fence (Anti Climb Fence) is made of generally wire mesh panel fences and concertina razor wire on top. The security fence panel has close mesh opening and horizontal wires that make it an incredibly robust fencing. This system has good through visibility and is also aesthetically pleasure. It is highly regarded as the most difficult fence to penetrate, providing an excellent defence against climbing and cut-through.

● Specification :

Material:	low carbon steel wire, Al-Mg alloy wire, stainless steel wire etc
Process:	weaving and welding; fence length 2m, 2.5m as standard
Height:	1.8m, 2m, 2.4m, 2.7m, 3.0m, 4.0m, 5.2m
Mesh Size:	75mm x 12.5mm
Horizontal Wires:	4mm x 12.5mm centres
Vertical Wires:	4mm x 75mm centres
Post Centres:	2.5m



→ Ornamental Steel Picket Fence

Picket Fence, also named Steel Tubular Fence, Standard fixing to posts by steel tube and screws or anti-theft screws. They are anti tamper and provide you with peace of mind. They can be supplied on request.

Features: Durable, Corrosion Resistance, Weather Resistance, maintenance Free, easy to install.



Roll Top Mesh Fence / BRC Fence

The Roll top mesh fence is completely fencing system, it is conclusive of fence panel, post, gates and fastener system. The roll top fencing system is a unique rolled beam section at the top and bottom of the fence providing a user friendly surface. The open mesh design is decorative in appearance and along with the security features make it ideal for playgrounds and play areas.



Traffic Fence & Barrier

Framed welded guardrails is ready for installation in accordance with customer's specific requirements. Applied to municipal engineering projects, event traffic control, road barrier, commercial or residential barrier



Chain Link Fence

Material: Galvanized wire, PVC coated wire

Chain link fence with good elasticity, high strength, convenient transportation, the construction characteristics of the flexible, and therefore is widely used in sports venues, animal breeding, plant quarantine and protective engineering, etc.

Aperture size	1"	1.5"	2"	2 1/4"	2 3/8"	2 1/2"	2 5/8"	3"	4"
	25mm	40mm	50mm	57mm	60mm	64mm	67mm	75mm	100mm
Wire Diameter	BWG18-13 1.2mm-2.4mm		BWG16-8 1.6mm-4.2mm					BWG18-7 2.00mm-5.00mm	
Length	5m-20m								
Width	0.5m-5m								
Other Specifications are also available.And we can also produce as customers' requests									



Australian Temporary Fence

Shengxiang Australian Temporary Fence has been tested and certified to fully comply with new Australian Standard AS 4687:2022 Temporary Fencing and Hoardings.

Panel size : Length 2.4m x Height 2.1 m

Frame: OD32mm,thickness 1.3mm,2.0mm

Infill mesh: Horizontal Wire 3/4 mm,Vertical Wire 3/4 mm

Mesh size: 60mm x 150mm, other sizes are available.

Finish: Hot dipped galvanized + silver paint.

UV treatment base feet filling with concrete, color red, yellow, orange etc.



American Chain Link Temporary Fencing

Chain Link Temporary Fence is made of high strength galvanized steel pipe welded into a frame, filled with flexible chain link mesh inside and the base is welded with steel pipe.

They are widely used for building projects, construction sites, crowd control, a sideline or a boundary barrier.Chain link temp panels are available in multiple sizes for different uses. The height is usually 6 feet, while the width ranges from 8 feet to 14 feet.

Features & benefits:Easy to install,corrosion resistant,solid construction with high impact resistance.



Canada Temporary Fencing

Raw materials: High quality low carbon steel wire, square pipes

Surface finishing:

-Galvanized, -powder spray coated, -PVC coated in any colors

Fittings: Steel base, steel clips, brace

Applications: perimeter protection of construction sites, road closure, events demarcation, warehouse partition and crowd control, etc.

Standard frame sizes: 8'x10' 6'x10' 4'x10', other sizes available upon request.



Crowd Control Barrier

Our Crowd Control Barrier are ideal for any event or situation that requires people management: sports events, concerts, festivals, airports, security events. Our Crowd Barriers are comply with Australian Standard A.S. 1926.1-2007 with highest quality, lightweight yet strong and fully hot dipped galvanised for long life and multiple use indoors and outdoors.

Each barrier interlocks providing a continuous barrier and does not require any additional clamping or tools.

Crowd Control Specification:

Panel Size: 2200mm (L) x 1100mm (H)

Frame: 25/32mm OD pipe

Infill Pickets: 100mm Spacings

Finish: Hot Dip Galvanising



Livestock Panle / Gate / Equipment

Usually called cattle panel, horse panel, livestock panel, corral panel etc. It is fabricated with welded hot dip galvanized pipes for the use of fencing livestock, such as cattle, cow, bull, calves, sheep, goat, dog, alpaca, horse etc.

The pipes are galvanized round pipe or the oval pipe, the square pipe. weld the pipe together, then make the spot smoothing, then silver painted.



Material	hot dipped galvanized steel pipe
Size (H*L)	1.8*2.1m; 1.8*3.37m
Horizontal Pipe	three types(round, square, oval) 1) round pipe:32*1.6mm;42*1.6mm 2) square pipe:40*40*1.6mm;50*50*1.6mm 3) oval pipe:30*60*1.6mm;40*80*1.6mm
Structural Style	one set=one net +two pins
Bars/Rails	1.8m high with 6 bars/rails or 1.6m high with 5 bars/rails
Applications	Used in protecting of animals
Main Markets	Canada,US,Australia,New Zealand,European and Asia countries.



Field Fence / Rural Wire Fencing

Field Fence are made of hot-dipped zinc coated steel wire, offer high strength and tensile strength, provide safety fencing against fierce striking of cattle, horse or goats. Knotted Wire Mesh Fences make an ideal fencing material for grasslands husbandry.

Num	Specifications mesh		Gross Weight (kg)	Set and bottom silk Diameter (mm)	In silk Diameter (mm)	Volume diameter (mm)
	Type	Specifications				
1	7/150/13/50	102*114*127*140*152*178	19.3	2.5	2.0	270
2	8/150/13/50	89/75*89*102*114*127*140*152	20.8	2.5	2.0	270
3	8/150/102/50	89*102*114*127*140*152*178	21.6	2.5	2.0	270
4	8/150/1016/50	102*114*127*140*152*178*203	22.6	2.5	2.0	270
5	8/150/1143/50	114*127*140*152*178*203*229	23.6	2.5	2.0	270
6	9/150/99/50	89/75*89*102*114*127*140*152*178	23.9	2.5	2.0	270
7	9/150/1245/50	102*114*127*140*152*178*203*229	26.0	2.5	2.0	270
8	10/150/1194/50	89/75*89*102*114*127*140*152*178*203	27.3	2.5	2.0	270
9	10/150/1334/50	89*102*114*127*140*152*178*203*229	29.4	2.5	2.0	270
10	11/150/1422/50	89/75*89*102*114*127*140*152*178*203*229	30.8	2.5	2.0	270



Star Post / T Post

Steel posts can be supplied in almost all shapes: T-post, Y-post, L-post, Studded T post, U channel post and various tubular posts. GI fence posts and HDG posts are used together with Pre-galvanized wire mesh fence and hot dipped zinc plated wire fence barriers.



DIY Fencing Tools

We also supply some hobby farm fencing DIY tools and hardware such as post driver, post lifter, wire spinner, strainer, wire tensioner, hog ring tools, tie wires, U shape nails etc.



Barbed Wire

Barbed wire: the least expensive fencing option made of galvanized steel core wire with option of PVC coated color in green, blue, yellow or other colors on request.

Widely installed in pasture areas or for large land boundary.



PVC coated wire



galvanized steel wire



Razor Wire

Razor wire: Single coil razor wire is installed on top of the chain link fence or 3D welded fence to increase security level of the fencing system. A varied blade styles are available.

Razor wire grid mesh: Spiral intersected razor wire grid mesh offers the highest security level of protection for the fencing areas, it is easy in installation and transportation.



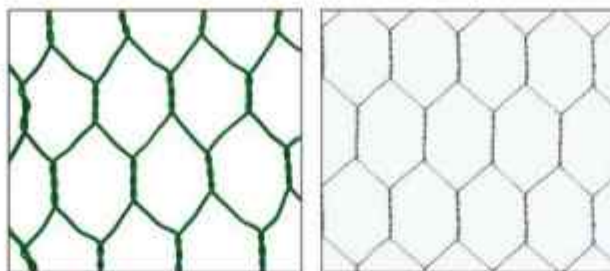
Razor Blade Type And Specification						
Size	Shape	Thickness(mm)	Wire Dia(mm)	Blade Length(mm)	Blade Width(mm)	Blade Spacing(mm)
BTO-12		0.5±0.05	2.5±0.1	12±1	15±1	26±1
BTO-15		0.5±0.05	2.5±0.1	15±1	15±1	33±1
BTO-22		0.5±0.05	2.5±0.1	22±1	15±1	34±1
BTO-30		0.5±0.05	2.5±0.1	30±1	18±1	45±1
CBT-65		0.6±0.05	2.5±0.1	65±2	21±1	100±2

Gabion Box

Hexagonal wire netting

Material: galvanized steel woven wire mesh with option of PVC powder coated up on request.

The most low cost and flexible woven wire mesh, easy in transportation and storage, multiple task for effective perimeter to protect large area.



Gabion Box

Material: high quality low carbon steel wire or stainless steel wire available upon request.

Manufacturing methodology: reverse twisted, galvanized after or before weaving, electroplate galvanized, Hot-dipped plastic-coated, stainless steel wire PVC coated, etc.

Applications: applied in construction, oil & chemical industry, plant protection, food processing facilities, for example, net cast, stone cage, insulated net wall, boiler cover, poultry fence, etc.

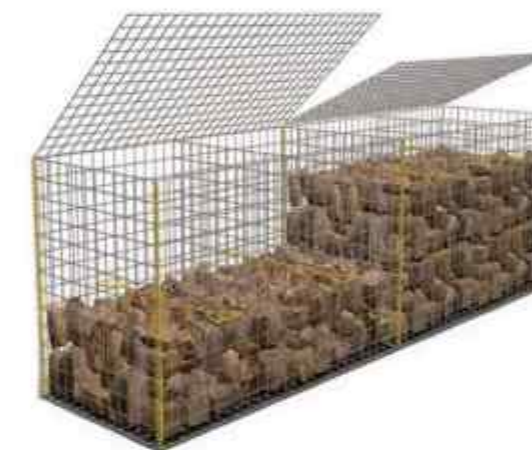
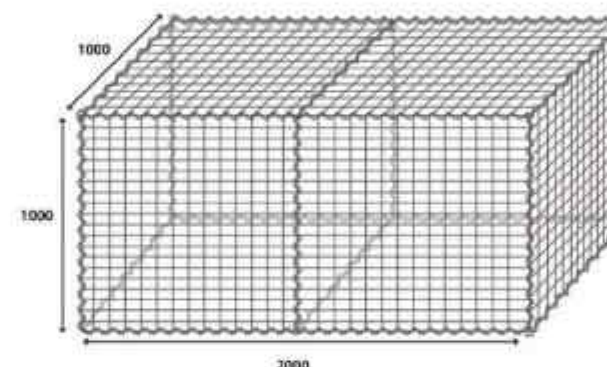
Gabion Box Description:

Hexagonal wire netting gabions are mesh containers made out of hexagonal galvanized steel wire. The wire diameter varies with the hexagonal nettings, wire from 2.0mm to 4.0mm for hexagonal wire netting without PVC coating. For PVC coated hexagonal wire netting, the outside diameter ranges from 3.0mm to 4.0mm. The wire of the outside frame edge is one wire gauge thicker than the wire used for hexagonal wire netting.



Welded Gabion Box

Shengxiang Weleded Gabion Box are idea for Gabion Retaining Wall for garden, landscaping or construction purpose, with the sand bag it can be used for defence barrier. It is made of collapsible heavy gauge welded mesh panels, spiral wires container and heavy duty fabric liner, used as a temporary to semi-permanent levee or protective wall.



Welded Wire Mesh Rolls / Panels

Material: galvanized low carbon steel wire with option of PVC coated color.

Descriptions: welded mesh in a roll or panel sheet are widely used in construction, machinery and other fabrication industries.

Availability:

- Black metal wire mesh
- Galvanized wire mesh
- Brass wire/copper wire mesh
- PVC coated metal wire mesh
- Stainless steel wire mesh
- High tensile wire mesh



Reinforcement Mesh

We provide kinds of Concrete reinforcing mesh. Square Rib Mesh, Rectangular Rib Mesh, Trench Rib mesh, Ute mesh etc.



PRODUCT CODE	STANDARD UNIT	MAIN WIRE (mm)	EDGE WIRE (mm)	CROSS WIRE (mm)
SL81	Sheet	7.60@100	7.60@100	7.60@100
SL102	Sheet	9.50@200	6.75@100	9.50@200
SL92	Sheet	8.55@200	6.00@100	8.55@200
SL82	Sheet	7.60@200	6.00@100	7.60@200
SL72	Sheet	6.75@200	4.75@100	6.75@200
SL62	Sheet	6.00@200	4.75@100	6.00@200
SL52	Sheet	4.75@200	4.75@200	4.75@200

Dog Kennel / Pet Cages

We supply different kinds of pet enclosures such as: puppy pen, dog kennel, and chicken coop.

1. Black Puppy Pen, it comes with panels, gates, and pins.
2. Heavy Duty Dog Enclosure, wire 4mm, frame OD 32mm, welded.
Size of panels and gates: 1.2m(W) x 1.8m(H) or 1.5m(W) x 1.8m(H).
These panels and gates can be assembled for sizes such as: 3.6m x 2.4m x 1.8m, 4.5m x 3m x 1.8m etc.
3. We also have Stackable Enclosure
Size of panels and gates: 1.8m(W) x 1.2m(H)
4. Chicken Coop is flat-packed in boxes, easy to transport and assemble.
2m x 3m x 1.95m(sides height 1.15m)
4m x 3m x 1.95m(sides height 1.15m)
6m x 3m x 1.95m(sides height 1.15m)



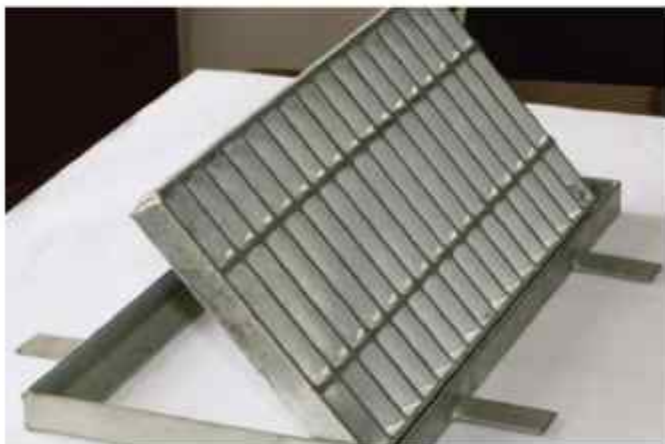
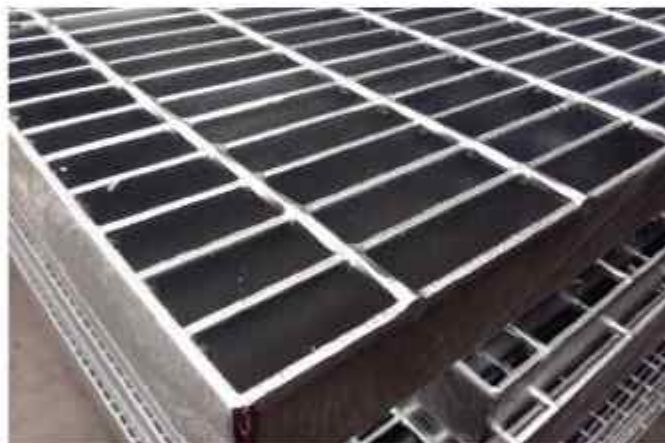
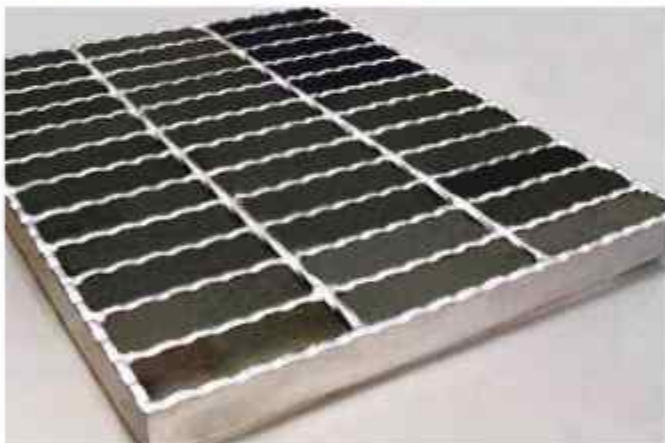
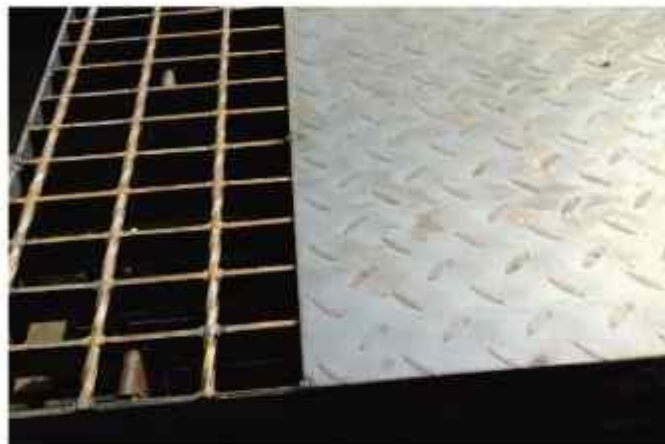
Steel Grating

Material: steel plate, stainless steel plate

Production lines for:

- Welded bar grating
- Expanded metal grating
- Safety grating
- Meet customers' design and requirement at reasonable price.

Applications: heavy duty flooring, deck span, stair treads



Expanded Metal Mesh

Material: carbon steel plate, galvanized steel plate, stainless steel plate, aluminum plate, heavy duty polyester sheet, etc.

Flattened expanded metal mesh or standard expanded metal mesh are widely used in mining site, tunnel, bridge, machineries, or construction projects.

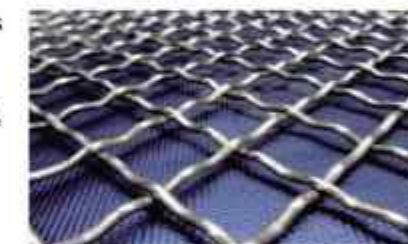


Crimped Wire Mesh

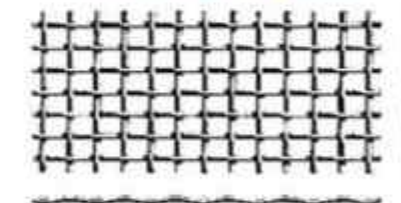
Made of crimped metal wire in waves, with the position of the two waves opposite to each other to guarantee the uniform of the opening.

Use: As wire mesh for pig breeding, mine and stone works, glass factory, coal mine, petroleum, hardware products, etc.

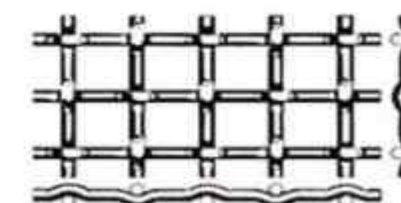
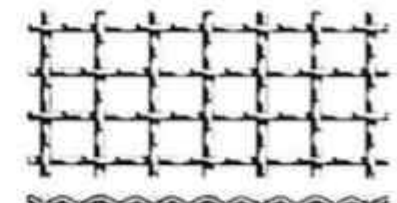
Variety: Stainless steel wire, galvanized iron wire, carbon steel wire.



Crimped screen mesh weave types



Double crimped screen Single Intermediate crimped screen



Double Intermediate crimped screen

Lock crimped screen

Stainless Steel Wire Mesh

Product lines are available for woven wire mesh of plain stainless steel, twill, dutch, twill & dutch

Specification:

- Square mesh from 2 to 650 mesh per inch with width from 91.4cm to 800cm.
- Dutch woven mesh is from 12x62 mesh to 400x2800 mesh per inch



Security Screen

Security Screen is also named Security Door Screen, Security Mesh, Security Window Screen

Made of Marine Grade Stainless Steel Mesh.

Market: Australia, New Zealand, USA, UK market etc

Material: 316 marine grade stainless steel, 304 marine grade stainless steel or steel security mesh

Ultra High Tensile wire (900 MPa) 0.7mm, 0.8mm, 0.9mm, 1.1mm, 1.2mm etc

Mesh Size: 10 Mesh, 11 Mesh, 12 Mesh etc.

Finish: Black powder coated/black epoxy coated

Security Mesh Size:

Width: 700mm-1500mm

Length: 2000mm-2400mm

Security Screen feature:

Burglarproof, bulletproof, anti-fly and mosquito together

Our quality meet Austrial standard, pass knife test, impact test, jemmy attack test



Window Screen

General Introduction of Insect Wire Netting:

Wire Materials of Insect Wire Netting: Stainless steel wire, galvanized iron wire, aluminum wire, fiberglass, etc.

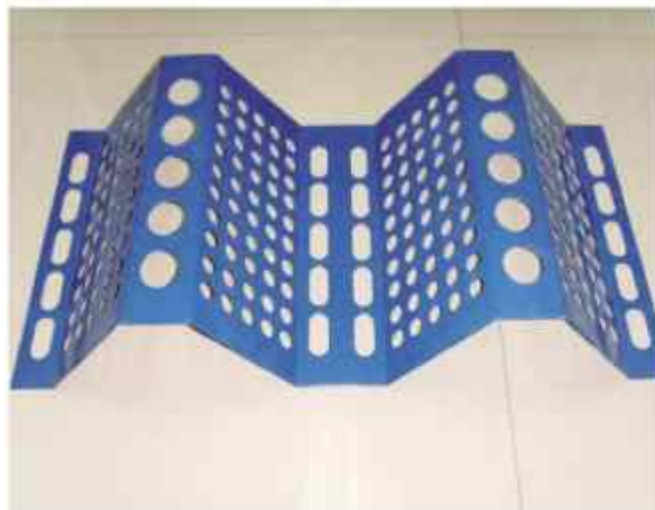
Uses: Insect Wire Netting is widely used in hotels and buildings to prevent insects and bugs from entering.

General sizes: 14mesh, 16mesh, 18mesh, etc. General wire diameter: BWG31 or BWG 32.

Specification List of Window Screen Netting				
Variety	Specification			Technical Notes
	Mesh/Inch	Wire Gauge	Roll Size	
Gal. Iron Wire Netting	10mesh x 10mesh		3"x100"	Process: Electric galvanized after weaving
	14mesh x 14mesh	BWG31	4"x100"	
	16mesh x 10mesh	BWG32	1x25M	Color: White or blue white
	18mesh x 18mesh	BWG33		
	18mesh x 14mesh	BWG34	1.2x30M	
	22mesh x 22mesh		1.5x25M	
24mesh x 24mesh				
Enamelled Iron Wire Netting	Same as above			Green or dark green
Aluminum Wire Netting	Same as above			Al-mg alloy or pure aluminium
Fiberglass Wire Netting	12 x 12	BWG31	3"x100"	Available in different colors
	14 x 14		4"x100"	
	16 x 16	BWG32	1x25M	
	16 x 14			
PVC Wire Netting	12 x 12	As above		Twisted weaving: 12, 14, 16mesh; Plain weaving: 18, 22, 24mesh; Colors available: white, blue, green, etc.
	14 x 14			
	16 x 16			
	18 x 18			
	18 x 14			
	20 x 20			
Stainless Steel Wire Netting	14 x 14	SWG38	3"x10	Materials: Stainless steel 304, 316, 316L
PVC Coated Wire Netting	12x 12	BWG31	As	Different colors available. Used in



Perforated Metal Sheet



- Standard Material: low carbon steel, galvanized steel, stainless steel, aluminum etc.
- Non-standard Material is available upon the request: copper, brass, PVC coated steel etc.
- Fabrication process: perforate punching, flatting, cutting, shaping, rolling, welding and surface finishing
- Styles: Square mesh • Oval mesh • Round mesh • Rectangular mesh • Diamond mesh • Hexagon • Triangular mesh • Military type mesh etc.

Steel Materials

Perforated metal is a kind of sheet metal usually made with styles of perforating, embossing, slotting or checkered plates. We can manufacture a wide rang of metal sheets with different thickness and sheet size. We also offer different steel products such as pipes, coils and profiles.



Black Annealed Wire / MS Binding Wire

Black Iron Wire is also known as oil painted black iron wire or black mild steel wire, quality soft and flexible, mostly used as binding wire or tie wire.

Black Iron Wire is offered in the form of coil wire, tie wire or cut into straight wire, or made twin wire.

We also offer Small coil wire weight from 200gram to 2kg, packing in carton or bucket, some of them put in a reel for easy to use.

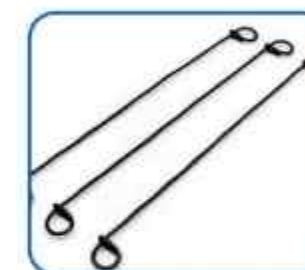


Loop Tie Wire

Loop tie wire is available in length from 3" to 24".

Finish of loop tie wire can be: black annealed, copper, galvanized or PVC coated.

We can also produce particular standard.



PVC Coated Wire

PVC Coated Wire is manufactured with quality iron wire. PVC is the most popular plastic for coating wires, as it is relatively low in cost, resilient, fire retardant and possesses good insulating properties. Common colors available for PVC coated wire are green and black. Other colors also available on request.

PVC Coated Wire Application: The most popular use for PVC coated wire is in the construction of chain link fences for industrial security fences, Gabions, tie wires etc. It is also used in other applications such as coat hangers and handles.



High Tensile Steel Wire

Material of High Tensile Steel Wire is high carbon steel with Tensile Min 1200MPa/mm².

It used in Barbed wires, electric fence, field fence, wire rop, springs etc.



Galvanized Iron Wire

Galvanized wire made of high quality low carbon steel wire. there are electro galvanized and hot dipped galvanized, the zinc coating is symmetrical and stably, have classy capability of anticorrosive and antirust.

Our Galvanized Wire Factory produces electric galvanized wire at diameter ranging from BWG5# to BWG30#, which can be supplied in the form of coils, spools, U type wire or straightened and cut into tie wire.

The hot dipped galvanized wire use for chain link fence, welded fence, weaving gabions, armouring cables, tomato support etc.



Spool Wire

Spool Wire is a regular kind of packing, spooling the wire in iron spools, plastic spool or wooden spools from 1kg to 500kg. Wire diameter: 0.03mm-5mm.



Straight Cut Wire

We offer different kinds of bale ties which made of high carbon steel wire. Use for tying cotton, plastic, paper or hay etc.

Quick link bale tie wire offers a safe, fast method of simplifying your baling operations. Quick links bale tie requires no tools or seals to complete the tie.



Baling Wire / Quick Link Bale Tie

We offer different kinds of bale ties which made of high carbon steel wire. Use for tying cotton, plastic, paper or hay etc.

Quick link bale tie wire offers a safe, fast method of simplifying your baling operations. Quick links bale tie requires no tools or seals to complete the tie.



Nails

We also manufacture nails such as Common nails, Roofing Nails, Concrete Nails, Coil Nails, U nails, Strip Nails and Dry wall screw with different steel grade and sizes.

Those nails are the most widely used in general construction, pallet making, fence building etc.

