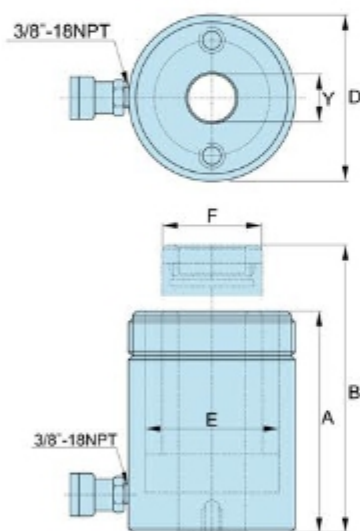


Single Acting Hollow Plunger Hydraulic Cylinder



Product Descriptions

Single acting hollow plunger hydraulic cylinder applies to processing, maintenance and traction work. The special design of the hollow piston rod makes the tow bar or cable can pass through the hydraulic cylinder to conduct lifting or jacking operation, commonly used in the work of backward traction and forward extrusion. Equipped with interchangeable steel reinforced piston base, can also be used for regular lifting operation.

Product Features

- ◆ Single-acting, spring return.
- ◆ Baked enamel finish for increased corrosion resistance.
- ◆ Hollow plunger design allows for both pull and push forces.
- ◆ Collar threads for easy fixturing.
- ◆ Built-in scraper seal reduces contamination, extending cylinder life.
- ◆ 3/8" - 18NPT coupler and dust cap included on all models.

Industry Applications

- ◆ Heat exchanger assembling and compacting.
- ◆ Steel cable locking in bridge construction.
- ◆ Synchronous lifting of steel structure in gymnasium construction.
- ◆ Steel strand pre-tightening in bridge box girder prefabricating.

Field Applications



▲ Oil pipeline equipment maintenance in oil field.



▲ Press-mounting bearing in equipment manufacturing.



▲ Assembling and use of large heat exchanger.



▲ Synchronous lifting of large windmill.



▲ Synchronous lifting of steel structure in gymnasium construction.



▲ Synchronous lifting of steel structure in gymnasium construction.

Technical Parameters

Model	Capacity (T)	Max. Working Pressure (MPa)	Closed Height A (mm)	Stroke (mm)	Effective Area (cm ²)	Central Hole Diameter Y (mm)	Oil Capacity (cm ³)	Outside Diameter D (mm)	Plunger Diameter F (mm)	Weight (kg)
SOV-RCH-120	13	70	55	8	17.9	19.6	14	69	35.1	1.5
SOV-RCH-121			120	42			75			2.8
SOV-RCH-123			184	76			136			4.4
SOV-RCH-202	20	70	162	49	30.7	26.9	150	98	54.1	7.7
SOV-RCH-206			306	155			476			14.1
SOV-RCH-302	30	70	178	64	46.6	33.3	298	114	63.5	10.9
SOV-RCH-306			330	155			722			21.8
SOV-RCH-603	60	70	247	76	82.3	53.8	626	159	91.9	28.1
SOV-RCH-606			323	153			1259			35.4
SOV-RCH-1003	100	70	254	76	133.0	79.0	1011	212	127.0	63.0