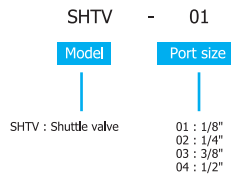


Pneumatic Equipment

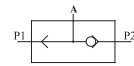
Shuttle Valve (SHTV Series)



Ordering Code



Symbol



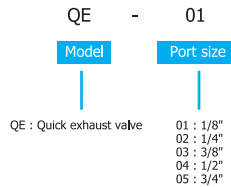
Specifications

Model	SHTV01	SHTV02	SHTV03	SHTV04
Media	Air			
Port size	1/8"	1/4"	3/8"	1/2"
Pressure range	(0.5 ~ 9.5 Kgf/cm ²)			
Orifice size Cv	10mm ² (0.56)	21mm ² (1.17)	47mm ² (2.6)	
Temp. Range	-5 ~ 60 °C			
Material of body	Aluminum alloy			

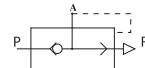
Quick Exhaust Valve (QE Series)



Ordering Code



Symbol



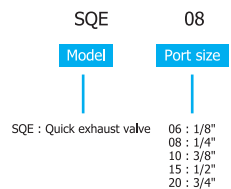
Specifications

Model	QE-01	QE-02	QE-03	QE-04	QE-05	
Media	Air					
Port size	1/8"	1/4"	3/8"	1/2"	3/4"	
Pressure range	0.5 ~ 9.5 Kgf/cm ²					
Orifice size mm ² Cv	P---->A	17(0.94)	30(1.67)	47(2.61)	106(5.59)	88(10.45)
	A---->R	20.8(1.16)	40(2.22)	65(3.61)	133(7.39)	212(11.78)
Temp. Range	-5 ~ 60 °C					
Material of body	Aluminum alloy					

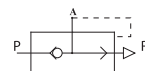
Quick Exhaust Valve (SQE Series)



Ordering Code



Symbol



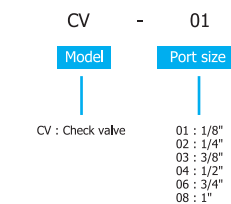
Specifications

Model	SQE-01	SQE-02	SQE-03	SQE-04	SQE-06	
Media	Air					
Port size	1/8"	1/4"	3/8"	1/2"	3/4"	
Pressure range	0.5 ~ 9 Kgf/cm ²					
Orifice size mm ² Cv	P---->A	17(0.94)	30(1.67)	47(2.61)	106(5.59)	88(10.45)
	A---->R	20.8(1.16)	40(2.22)	65(3.61)	133(7.39)	212(11.78)
Temp. Range	-5 ~ 60 °C					

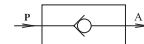
Check Valve (CV Series)



Ordering Code



Symbol



Specifications

Model	CV01	CV02	CV03	CV04	CV06	CV08
Media	Air					
Port size	1/8"	1/4"	3/8"	1/2"	3/4"	1"
Orifice size mm ² Cv	18(1)	27(1.5)	60(3.33)	73(4.06)	230(12.78)	260(140.44)
Pressure range	0.5 ~ 9.5 Kgf/cm ²					
Temp. Range	-5 ~ 60 °C					
Material of body	Aluminum alloy					