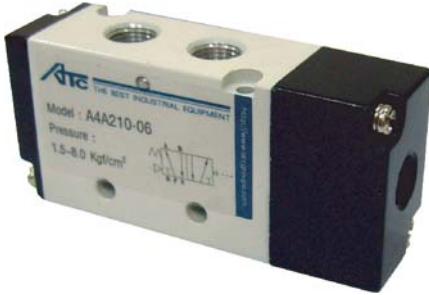
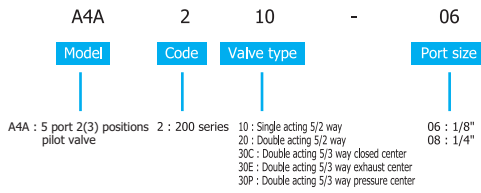


Pneumatic Equipment

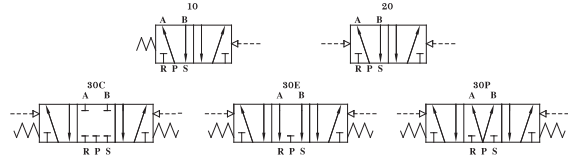
Pilot Valve (A4A2 Series)



Ordering Code



Symbol



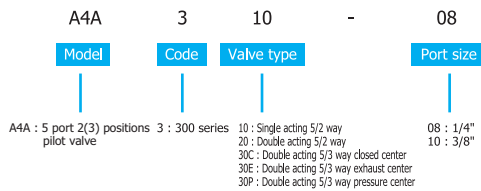
Specifications

Model NO		A4A210-06	A4A220-06	A4A230C-06	A4A230E-06	A4A230P-06	A4A210-08	A4A220-08	A4A230C-08	A4A230E-08	A4A230P-08
Port size (In)	inch	1/8	1/8	1/8	1/8	1/8	1/4	1/4	1/4	1/4	1/4
Port size (Out)	inch	1/8	1/8	1/8	1/8	1/8	1/4	1/4	1/4	1/4	1/4
Port size (Exhaust)	inch	1/8	1/8	1/8	1/8	1/8	1/8	1/8	1/8	1/8	1/8
Orifice size	mm ² (CV)	14(0.78)	14(0.78)	12(0.67)	12(0.67)	12(0.67)	16(0.89)	16(0.89)	12(0.67)	12(0.67)	12(0.67)
Valve type		10:5/2 way single pilot	20:5/2 way double pilots	30C:5/3 way closed center double pilots	30E:5/3 way exhaust center double pilots	30P:5/3 way pressure center double pilots	10:5/2 way single pilot	20:5/2 way double pilots	30C:5/3 way closed center double pilots	30E:5/3 way exhaust center double pilots	30P:5/3 way pressure center double pilots
Media		Air									
Action type		Internald pilotd									
Pressure range	kgf/cm ²	1.50~8.00									
Fluid temperature	°C (°F)	+5~+60(+41~+140)									
Maximum frequencies	cycle/sec	5									
Lubrication		Non-lubricated									
Material of body		Aluminum alloy									

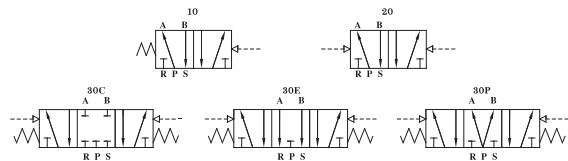
Pilot Valve (A4A3 Series)



Ordering Code



Symbol



Specifications

Model NO		A4A310-08	A4A320-08	A4A330C-08	A4A330E-08	A4A330P-08	A4A310-10	A4A320-10	A4A330C-10	A4A330E-10	A4A330P-10
Port size (In)	inch	1/4	1/4	1/4	1/4	1/4	3/8	3/8	3/8	3/8	3/8
Port size (Out)	inch	1/4	1/4	1/4	1/4	1/4	3/8	3/8	3/8	3/8	3/8
Port size (Exhaust)	inch	1/4	1/4	1/4	1/4	1/4	1/4	1/4	1/4	1/4	1/4
Orifice size	mm ² (CV)	25(1.40)	25(1.40)	18(1.00)	18(1.00)	18(1.00)	30(1.68)	30(1.68)	18(1.00)	18(1.00)	18(1.00)
Valve type		10:5/2 way single pilot	20:5/2 way double pilots	30C:5/3 way closed center double pilots	30E:5/3 way exhaust center double pilots	30P:5/3 way pressure center double pilots	10:5/2 way single pilot	20:5/2 way double pilots	30C:5/3 way closed center double pilots	30E:5/3 way exhaust center double pilots	30P:5/3 way pressure center double pilots
Media		Air									
Action type		Internal pilot									
Pressure range	kgf/cm ²	1.50~9.00									
Fluid temperature	°C (°F)	+5~+60(+41~+140)									
Maximum frequencies	cycle/sec	4									
Lubrication		Non-lubricated									
Material of body		Aluminum alloy									