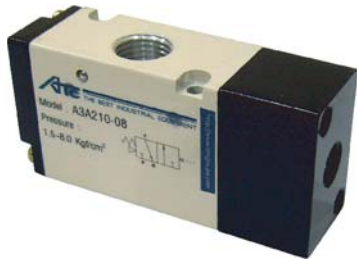
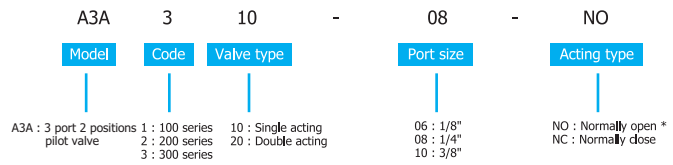


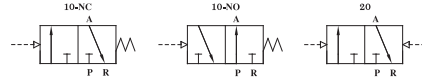
### Pilot Valve (A3A1 A3A2 A3A3 Series)



#### Ordering Code



#### Symbol



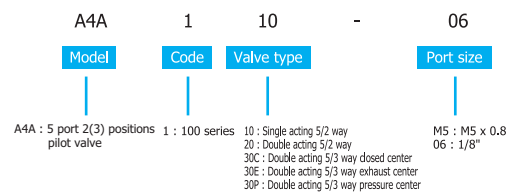
#### Specifications

Model NO		A3A110-06	A3A120-06	A3A210-06	A3A220-06	A3A210-08	A3A220-08	A3A310-08	A3A320-08	A3A310-10	A3A320-10
Port size (In)	inch	1/8	1/8	1/8	1/8	1/4	1/4	1/4	1/4	3/8	3/8
Port size (Out)	inch	1/8	1/8	1/8	1/8	1/4	1/4	1/4	1/4	3/8	3/8
Orifice size	mm <sup>2</sup> (CV)	14(0.78)	14(0.78)	14(0.78)	14(0.78)	16(0.89)	16(0.89)	25(1.40)	25(1.40)	30(1.68)	30(1.68)
Valve type		10:3/2 way single pilot	20:3/2 way double pilots	10:3/2 way single pilot	20:3/2 way double pilots	10:3/2 way single pilot	20:3/2 way double pilots	10:3/2 way single pilot	20:3/2 way double pilots	10:3/2 way single pilot	20:3/2 way double pilots
Media		Air									
Action type		Internal pilot									
Pressure range	kgf/cm <sup>2</sup>	1.50~8.00									
Fluid temperature	°C (°F)	+5~+60(+41~+140)									
Maximum frequencies	cycle/sec	10									
Lubrication		Non-lubricated									
Material of body		Aluminum alloy									

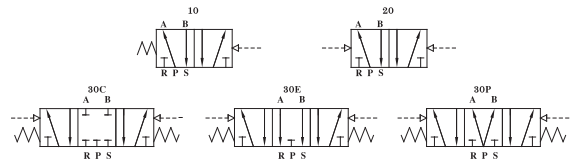
### Pilot Valve (A4A1 Series)



#### Ordering Code



#### Symbol



#### Specifications

Model NO		A4A110-M5	A4A120-M5	A4A130C-M5	A4A130E-M5	A4A130P-M5	A4A110-06	A4A120-06	A4A130C-06	A4A130E-06	A4A130P-06
Port size (In)	inch	M5	M5	M5	M5	M5	1/8	1/8	1/8	1/8	1/8
Port size (Out)	inch	M5	M5	M5	M5	M5	1/8	1/8	1/8	1/8	1/8
Port size (Exhaust)	inch	M5	M5	M5	M5	M5	1/8	1/8	1/8	1/8	1/8
Orifice size	mm <sup>2</sup> (CV)	10(0.56)	10(0.56)	7(0.40)	7(0.40)	7(0.40)	12(0.67)	12(0.67)	9(0.50)	9(0.50)	9(0.50)
Valve type		10:5/2 way single pilot	20:5/2 way double pilots	30C:5/3 way closed center double pilots	30E:5/3 way exhaust center double pilots	30P:5/3 way pressure center double pilots	10:5/2 way single pilot	20:5/2 way double pilots	30C:5/3 way closed center double pilots	30E:5/3 way exhaust center double pilots	30P:5/3 way pressure center double pilots
Media		Air									
Action type		Internal pilot									
Pressure range	kgf/cm <sup>2</sup>	1.50~8.00									
Fluid temperature	°C (°F)	+5~+60(+41~+140)									
Maximum frequencies	cycle/sec	5									
Lubrication		Non-lubricated									
Material of body		Aluminum alloy									