

Dual Rod Cylinder (ACXS Series)



Ordering Code

ACXS 20 x 100
 Model Bore size Stroke

ACXS : Dual rod cylinder

Symbol

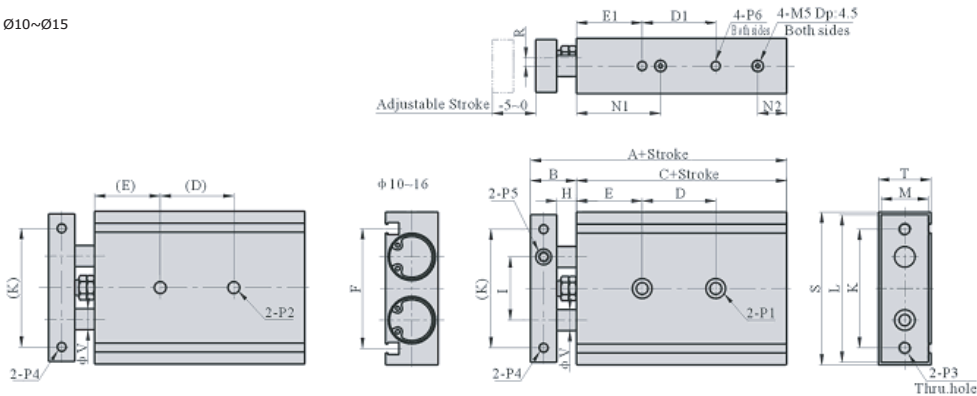


Specifications

Bore size	mm	10	15	20	25	32
Rod diameter	mm	6	8	10	12	16
Port size	inch	M5 X 0.8	M5 X 0.8	M5 X 0.8	1/8	1/8
Maximum stroke	mm	100	200	200	200	200
Media		Air				
Pressure range	kgf/cm ²	1.00 ~ 9.00				
Temperature range	°C	0 ~ 70				
Magnet type		Standard with magnet				
Sensor switch type		CS1-R				

Dimensions

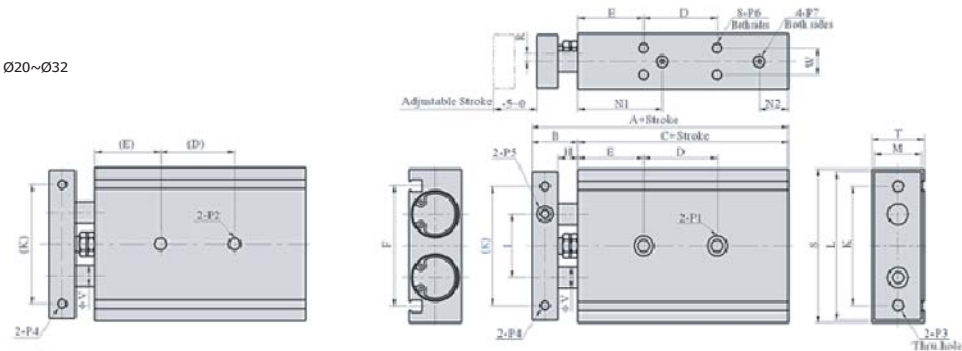
Ø10~Ø15



Bore size\Item	A	B	C	E	E1	F	H	I	K	L	M	N1	N2	R	S	T	V	P1
10	72	17	55	20	20	36.5	9	20	35	44	15	30	8	5	46	17	6	One sides: Ø6.5dp3.3 Thru.hole:3.4
15	79	19	60	30	30	46.5	9	25	45	56	18	38	8	5	58	20	8	One sides: Ø8dp4.4 Thru.hole:4.3

Bore size\Item	P2	P3	P4	P5	P6	D, D1									
Stroke						10~25	30~50	60~75	80	90~100	125	150	175	200	
10	M4 x 0.7 dp:7	M4x0.7	M3 x 0.5 dp:5	M5 x 0.8	M3 x 0.5 dp:4.5	30	40	50	70						
15	M5 x 0.8 dp:8	M5x0.8	M4 x 0.7 dp:6	M6 x 1.0	M4 x 0.7 dp:5	25	35	45	55	105	145				

Ø20~Ø32



Bore size\Item	A	B	C	E	F	H	I	K	L	M	N1	N2	R	S	T	V	W	P1
20	94	24	70	30	52	12	28	50	62	23	46	8	6.5	64	25	10	9.5	One sides: Ø6.5dp3.3 Thru.hole:3.4
25	96	24	72	30	61	12	35	60	78	28	43	9	9	80	30	12	13	One sides: Ø11dp6.3 Thru.hole:6.8
32	112	28	82	30	73	14	44	75	96	36	53	10	11.5	98	38	16	20	One sides: Ø11dp6.3 Thru.hole:6.8

Bore size\Item	P2	P3	P4	P5	P6	P7	D, D1									
Stroke							10~25	30~50	60~100	125	150	175	200			
20	M6 x 1 dp:10	M5 x 0.8	M4 x 0.7 dp:6	M8 x 1.25	M4 x 0.7 dp:5.5	M5 x 0.8	30	40	60	100	150					
25	M8 x 1.25 dp:12	M6 x 1.0	M5 x 0.8 dp:7.5	M8 x 1.25	M5 x 0.8 dp:7.5	1/8"	30	40	60	100	150					
32	M8 x 1.25 dp:12	M6 x 1.0	M5 x 0.8 dp:8	M10 x 1.5	M5 x 0.8 dp:7.5	1/8"	40	50	70	100	150					