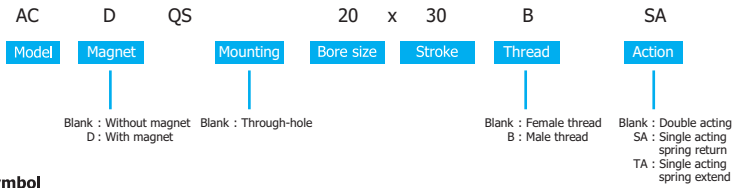


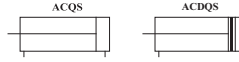
Compact Cylinder (ACQS ACQSW Series)



Ordering Code



Symbol

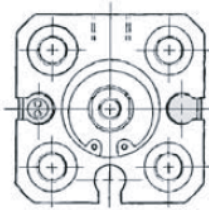


Specifications

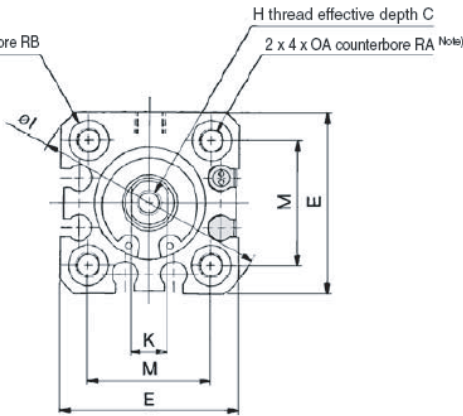
Bore size	mm	12	16	20	25
Rod diameter	mm	6	8	10	12
Port size	inch	M5 X 0.8	M5 X 0.8	M5 X 0.8	M5 X 0.8
Maximum stroke	mm	100	200	200	300
Media		Air			
Pressure range	kgf/cm ²	1.00 ~ 9.00			
Temperature range	°C	0 ~ 70			
Magnet type		Without magnet (Blank) , With magnet (D)			
Rod type		Female thread (Blank), Male thread (B)			
Sensor switch type		CS1-R			

Dimensions

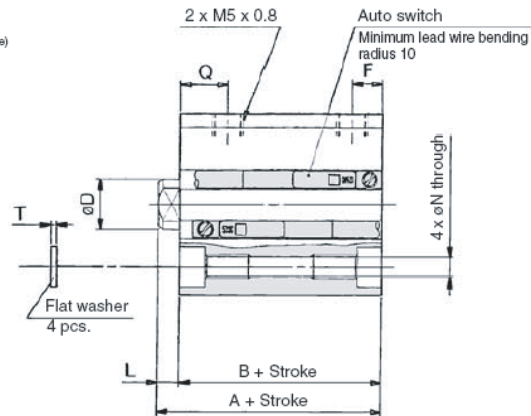
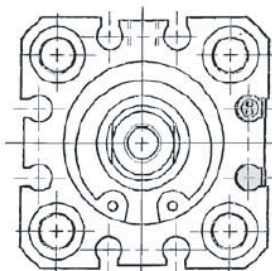
∅12



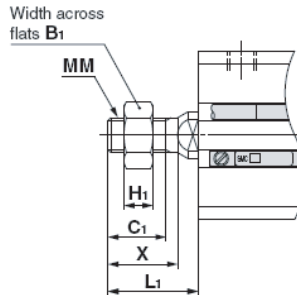
∅16



∅20~∅25



Rod end male thread



Bore size (mm)	B ₁	C ₁	H ₁	Standard stroke L ₁	Long stroke L ₁	MM	X
12	8	9	4	14	24	M5 x 0.8	10.5
16	10	10	5	15.5	25.5	M6 x 1.0	12
20	13	12	5	18.5	28.5	M8 x 1.25	14
25	17	15	6	22.5	32.5	M10 x 1.25	17.5

Bore size (mm)	Standard stroke range (mm)	Standard stroke								Long stroke range (mm)	Long stroke																	
		Without auto switch				With auto switch					With/Without auto switch				C	D	E	H	I	K	M	N	OA	OB	Q	RA	RB	T
		A	B	F	L	A	B	F	L		A	B	F	L														
12	5 to 30	20.5	17	5	3.5	25.5	22	5	3.5	35 to 200	45.5	32	7.5	13.5	6	6	25	M3 x 0.5	32	5	15.5	3.5	M4 x 0.7	6.5	7.5	7	4	0.5
16	5 to 30	20.5	17	5	3.5	25.5	22	5	3.5	35 to 200	45.5	32	7.5	13.5	8	8	29	M4 x 0.7	38	6	20	3.5	M4 x 0.7	6.5	7.5	7	4	0.5
20	5 to 50	24	19.5	5.5	4.5	34	29.5	5.5	4.5	75 to 200	55.5	41	9	14.5	7	10	36	M5 x 0.8	47	8	25.5	5.4	M6 x 1.0	9	9	10	7	1
25	5 to 50	27.5	22.5	5.5	5	37.5	32.5	5.5	5	75 to 300	59	44	11	15	12	12	40	M6 x 1.0	52	10	28	5.4	M6 x 1.0	9	11	10	7	1