

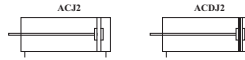
Pneumatic Cylinder (ACJ2 ACDJ2 Series)



Ordering Code



Symbol

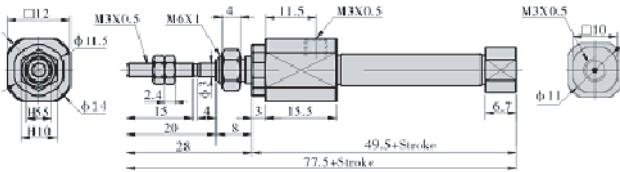


Specifications

Bore size	mm	6	10	16
Rod diameter	mm	3	4	5
Port size	inch	M3 x 0.5	M4 x 0.7	M5 x 0.8
Maximum stroke	mm	60	150	200
Media		Air		
Pressure range	kgf/cm ²	1.00 ~ 7.00		
Temperature range	°C	0 ~ 70		
Magnet type		Without magnet (blank), with magnet (D)		
Rod type		Female thread (blank), male thread (B)		
Sensor switch holder		AJ-6	AJ-10	AJ-16
Sensor switch type		CS1-S		

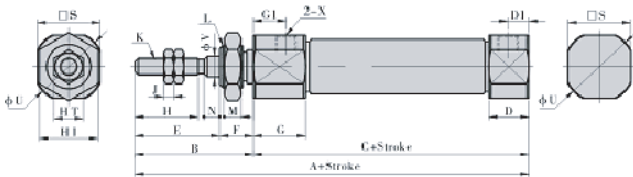
Dimensions

Ø6

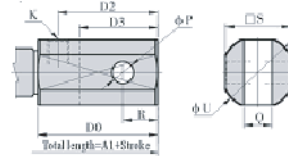


Ø10~Ø16

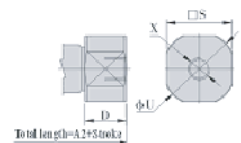
U : Flat-end type



CB : Double clevis type



R : Rear air axial



Item	A	A1	A2	B	C	D	D0	D1	D2	D3	E	F	G	G1	H	I	J	K	L	M	N	P	Q	R	S	T	U	V	X
10	74	87	74	28	46	9.5	22.5	5	18	13	20	8	11.5	7.5	15	11	2.4	M4 x 0.7	M8 x 1.0	4	3.5	3.3	3.3	5	12	7	14	4	M4 x 0.7
16	76	94	76	28	48	9.2	27.5	4.8	22.8	18	20	8	11.8	7.5	15	14	4	M5 x 0.8	M10 x 1.0	4	3.5	5	6.6	8	18	8	20	5	M5 x 0.8