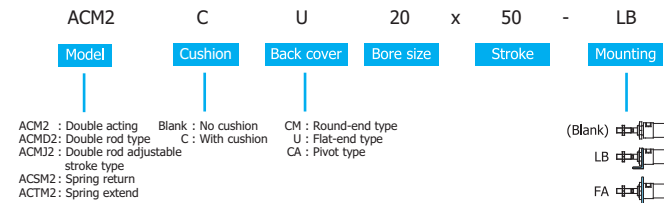


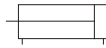
Stainless Steel Slim Cylinder
(ACM2 ACM22 ACMJ2 ACSM2 ACTM2 Series)



Ordering Code



Symbol



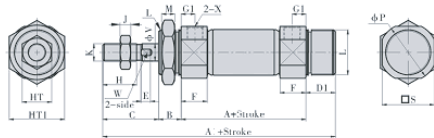
Specifications

Bore size	mm	20	25	32	40
Rod diameter	mm	8	10	12	16
Port size	inch	1/8	1/8	1/8	1/4
Action type		Single acting spring return, spring extend Double acting			
Media		Air			
Pressure range	kgf/cm ²	9.00			
Temperature range	°C	0 ~ 70			
Cushion type		Bumper			
Sensor switch type		Light in front (CS1-F), Light on top (CS1-U)			
Sensor switch holder		B-20	B-25	B-32	B-40
Additional variants		Stainless steel piston rod, female, extended, special thread piston rod			
Standard		Built in with magnet			

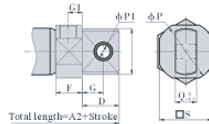
Dimensions

ACM2

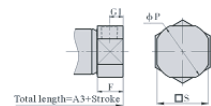
CM : Round-end type



CA : Pivot type

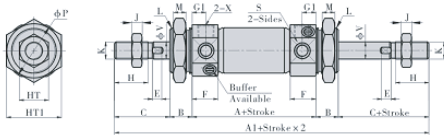


U : Flat-end type

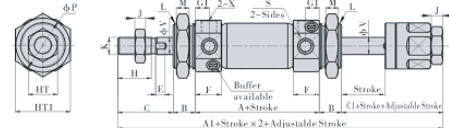


Item Bore size	A			B			C			D			E			F		G		H			J			K			L			L1			M			P			P1			Q			S			T			T1			X			V			W		
	A	A1	A2	A3	B	C	D	D1	E	Utype	Others	Utype	Others	H	J	K	L	L1	M	P	P1	Q	S	T	T1	X	V	W																																				
20	62	116	124	103	14	27	21	13	5	14.5	14.5	12	7.5	7.5	15.5	5	M8 x 1.25	M20 x 1.5	20	8	29	8	12	25	13	26	1/8	8	6																																			
25	62	120	128	108	14	31	21	13	5.5	15.5	14.5	12	8	7.5	19.5	6	M10 x 1.25	M26 x 1.5	26	8	33.5	8	12	30	17	32	1/8	10	8																																			
32	64	122	136	110	14	31	27	13	5.5	15.5	14.5	15	8	7.5	19.5	6	M10 x 1.25	M26 x 1.5	26	8	37.5	10	20	34.5	17	32	1/8	12	10																																			
40	88	154	165	138.5	16	34	27	16	7	22	21.5	15	11.5	11	21	8	M14 x 1.5	M32 x 2.0	32	10	46.5	10	20	42.5	19	41	1/4	16	14																																			

ACMD2



ACMJ2



Item Bore size	A			B			C			E			F			G			H			J			K			L			M			P			S			T			T1			X			V		
	A	A1	B	C	C1	E	F	G	H	J	K	L	M	P	S	T	T1	X	V																																
20	62	141	14	27	24	5	14.5	7.5	15.5	5	M8 x 1.25	M20 x 1.5	8	29	25	13	26	1/8	8																																
25	62	148	14	31	27	5.5	14.5	7.5	19.5	6	M10 x 1.25	M26 x 1.5	8	33.5	30	17	32	1/8	10																																
32	64	150	14	31	27	5.5	14.5	7.5	19.5	6	M10 x 1.25	M26 x 1.5	8	37.5	34.5	17	32	1/8	12																																
40	88	187	16	34	33	7	21.5	11	21	8	M14 x 1.5	M32 x 2.0	10	46.5	42.5	19	41	1/4	16																																

ACSM2

CM : Round-end type

CA : Pivot type

U : Flat-end type



ACTM2

CM : Round-end type

CA : Pivot type

U : Flat-end type

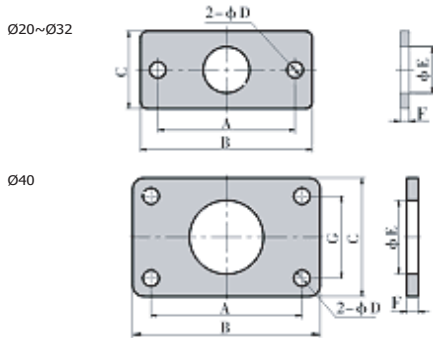


Item Bore size	A			A1			A2			A3		
	0-50	51-100	101-150	0-50	51-100	101-150	0-50	51-100	101-150	0-50	51-100	101-150
20	87	112	137	141	166	191	149	174	199	128	153	178
25	87	112	137	145	170	195	153	178	203	133	158	183
32	89	114	139	147	172	17	161	186	211	135	160	185
40	113	138	163	179	204	229	190	215	240	163.5	188.5	213.5

Item Bore size	A			A1			A2			A3			C
	0-50	51-100	101-150	0-50	51-100	101-150	0-50	51-100	101-150	0-50	51-100	101-150	
20	87	112	137	141	166	191	149	174	199	128	153	178	27
25	87	112	137	145	170	195	153	178	203	133	158	183	31
32	89	114	139	147	172	17	161	186	211	135	160	185	31
40	113	138	163	179	204	229	190	215	240	163.5	188.5	213.5	34

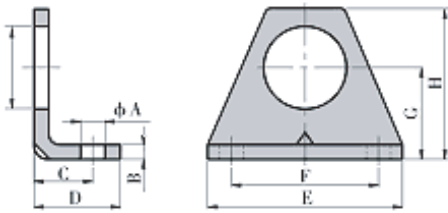
Pneumatic Equipment

FA



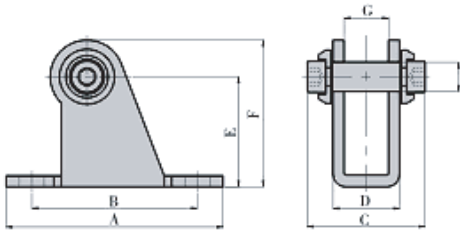
Item Bore size	A	B	C	D	E	F	G			
20	60	75	34	7	20.2	4	-			
25	60	75	40	7	26.2	4	-			
32	60	75	40	7	26.2	4	-			
40	66	82	52	7	32.2	5	36			

LB



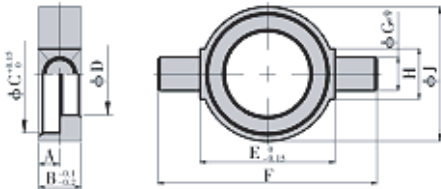
Item Bore size	A	B	C	D	E	F	G	H	I	
20	7	3	20	28	55	40	25	40	20.2	
25	7	3	20	28	55	40	28	47	26.2	
32	7	3	20	28	55	40	28	47	26.2	
40	7	3	23	33	75	55	30	54	32.2	

SDB



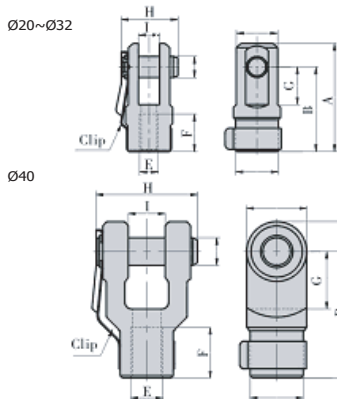
Item Bore size	A	B	C	D	E	F	G	H		
20	59	45	32	18.1	30	40	12.1	8		
25	59	45	32	18.1	30	40	12.1	8		
32	75	55	44	28.1	40	53	20.1	10		
40	75	55	44	28.1	40	53	20.1	10		

TC



Item Bore size	A	B	C	D	E	F	G	H	J	
20	5	10	28.3	20	32	52	8	12	32	
25	5	10	34.3	26	40	60	9	12	40	
32	5	10	34.3	26	40	60	9	12	40	
40	5	11	45.3	32	43	77	10	14	53	

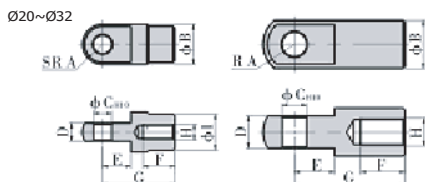
Y Knuckle



Item Bore size	A	B	C	D	E	F	G	H	I	J
20	46	36	18	17.5	M8 x 1.25	16	16	24	9	9
25	48	38	18	17.5	M10 x 1.25	18	16	24	9	9
32	48	38	18	17.5	M10 x 1.25	18	16	24	9	9
40	68	55	23	26	M14 x 1.5	22	25	24	16	12

Item Bore size	A	B	C	D	E	F	G	H	I	J
20	46	36	18	17.5	M8 x 1.25	16	16	24	9	9
25	48	38	18	17.5	M10 x 1.25	18	16	24	9	9
32	48	38	18	17.5	M10 x 1.25	18	16	24	9	9
40	68	55	23	26	M14 x 1.5	22	25	24	16	12

I Knuckle



Item Bore size	A	B	C	D	E	F	G	H	I	
20	9.5	20	9	9	14	16	36	M8 x 1.25	18	
25	9.5	20	9	9	14	18	38	M10 x 1.25	18	
32	9.5	20	9	9	14	18	38	M10 x 1.25	18	
40	15	24	12	16	20	22	55	M14 x 1.5	-	